

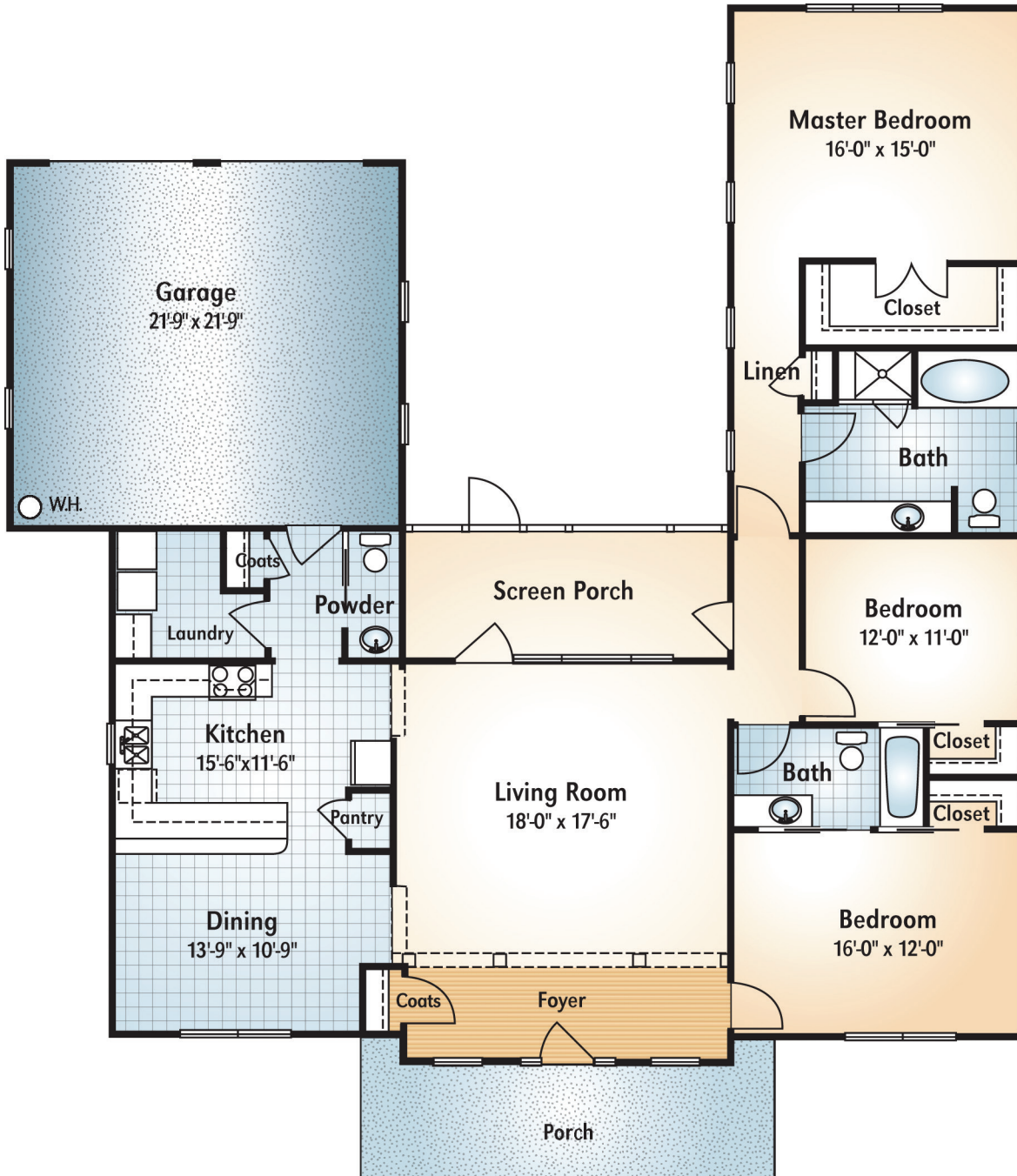
Golf View Homes

SINCLAIR "A3"

3 BEDROOMS • 2.5 BATHS

1,945 SQUARE FEET

Dimensions are approximate.



PARK SPRINGS®
A Life Plan Community

678-684-3300 | ParkSprings.com
500 Springhouse Circle | Stone Mountain, GA 30087

An Isakson Living Community
Active Adult | Assisted Living | Memory Care | Skilled Nursing

