

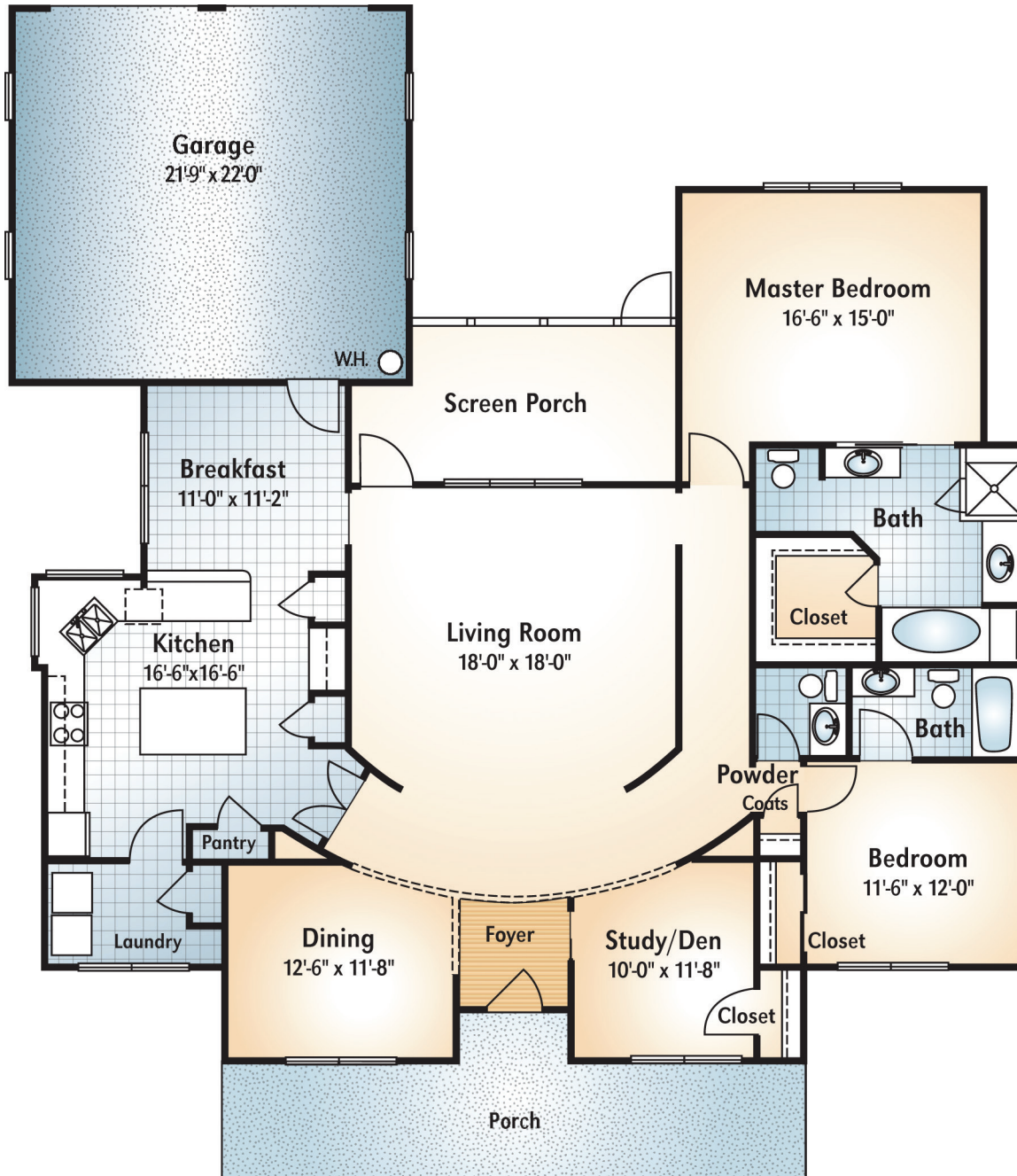
Golf View Homes

RABUN "A4"

3 BEDROOMS • 2.5 BATHS

2,086 SQUARE FEET

Dimensions are approximate.



PARK SPRINGS®
A Life Plan Community

678-684-3300 | ParkSprings.com
500 Springhouse Circle | Stone Mountain, GA 30087

An Isakson Living Community
Active Adult | Assisted Living | Memory Care | Skilled Nursing

