

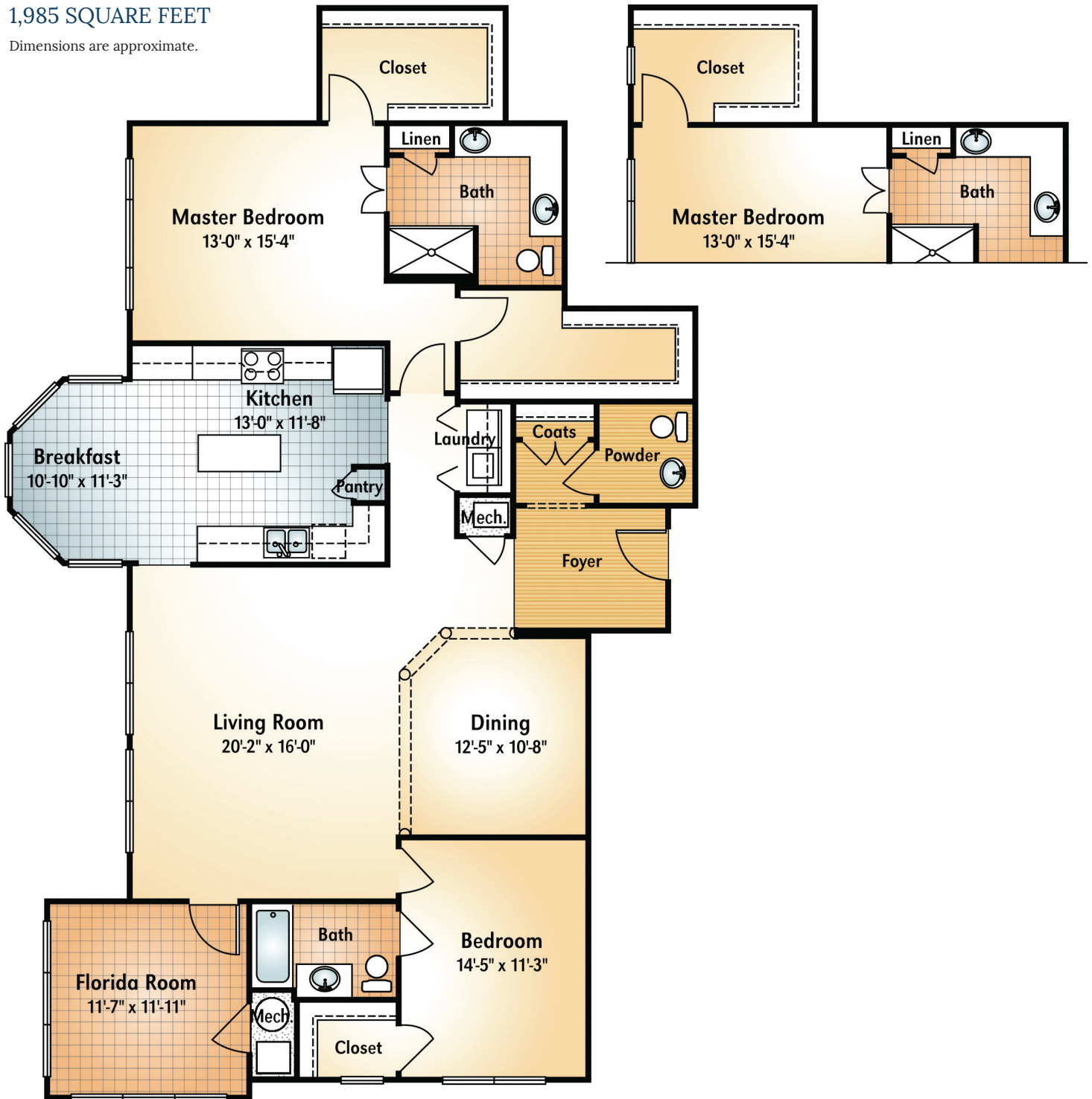
Golf View Villas

HAZEL "T"

2 BEDROOMS • 2.5 BATHS

1,985 SQUARE FEET

Dimensions are approximate.



PARK SPRINGS[®]
A Life Plan Community

678-684-3300 | ParkSprings.com
500 Springhouse Circle | Stone Mountain, GA 30087

An Isakson Living Community
Active Adult | Assisted Living | Memory Care | Skilled Nursing

