

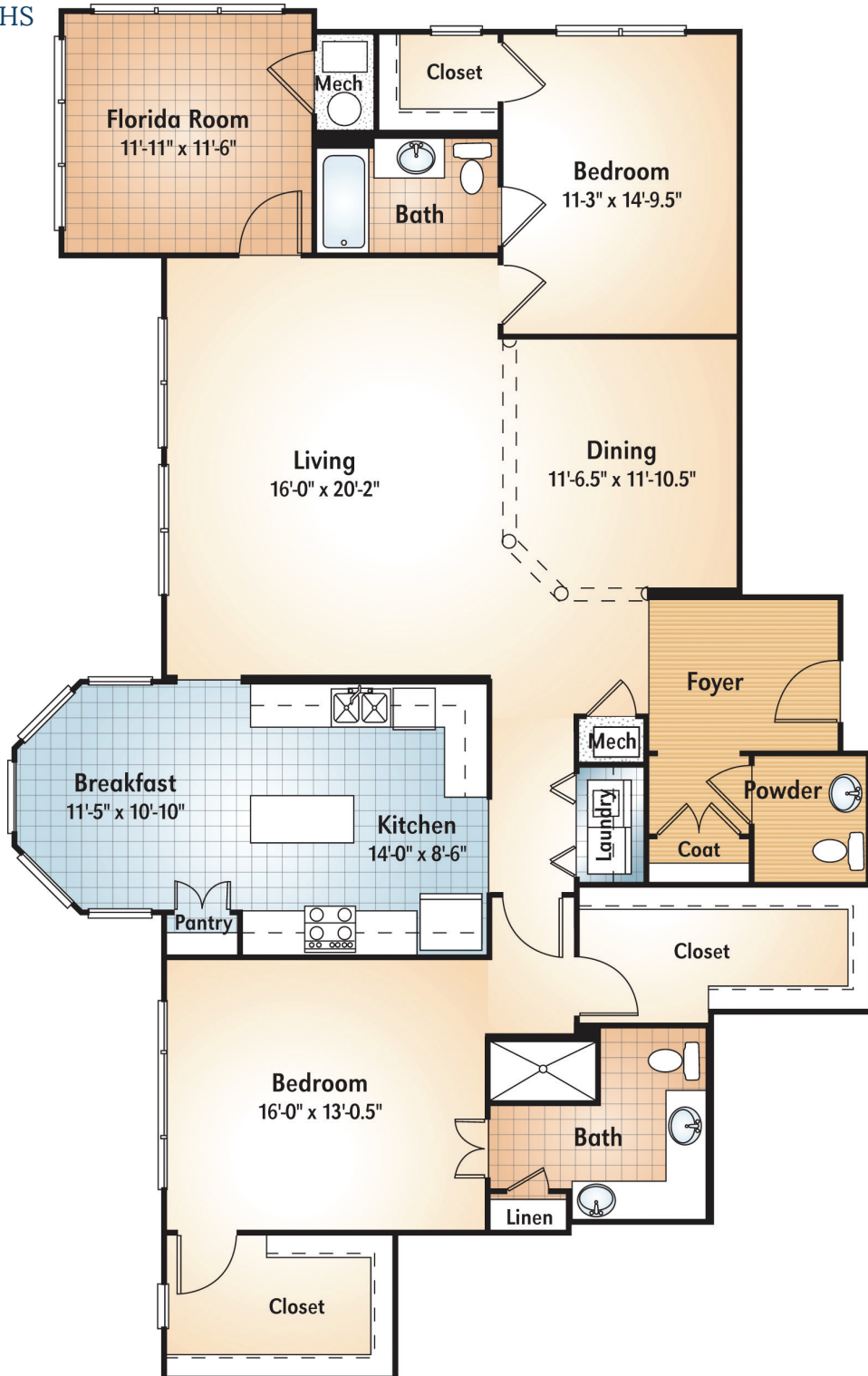
# Overlook Villas

## PEACHTREE "K"

2 BEDROOMS • 2.5 BATHS

1,983 SQUARE FEET

Dimensions are approximate.



**PARK SPRINGS**®  
A Life Plan Community

678-684-3300 | ParkSprings.com  
500 Springhouse Circle | Stone Mountain, GA 30087

**An Isakson Living Community**  
Active Adult | Assisted Living | Memory Care | Skilled Nursing

